

Scaled data based on original data using  
LM-79-08 Approved Method: Electrical and Photometric Measurements of Solid-  
State Lighting Products

Test Report Prepared for  
Cooper Lighting Solutions  
(formerly Eaton)

Brand: INVUE

Report Number: P151629

Luminaire Tested: **VWM-E01-LED-E1-SL4-HSS-7030**

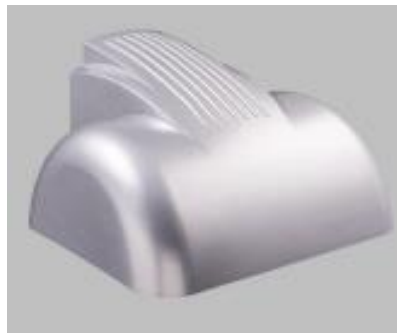
Issue Date: 03/03/2020

**Test Information**

Test Method: LM-79-08  
Report Number: P151629  
REPORT IS SCALED FROM IESNA LM-79-08 TEST DATA (P33728)  
Test Lab: INNOVATION CENTER-P3  
Issue Date: 03/03/2020  
Manufacturer: COOPER LIGHTING SOLUTIONS (FORMERLY EATON)  
Product Line: INVUE  
Catalog Number: VWM-E01-LED-E1-SL4-HSS-7030  
Description: VISION WALL MEDIUM LED LUMINAIRE  
(1) LIGHTBARS WITH AccuLED OPTICS - TYPE 4 W/ SPILL LIGHT CONTROL AND HOUSE SIDE SHIELD  
Light Source: (21) 3000K CCT, 70 CRI LEDs  
Ballast/Driver: -

**Summary**

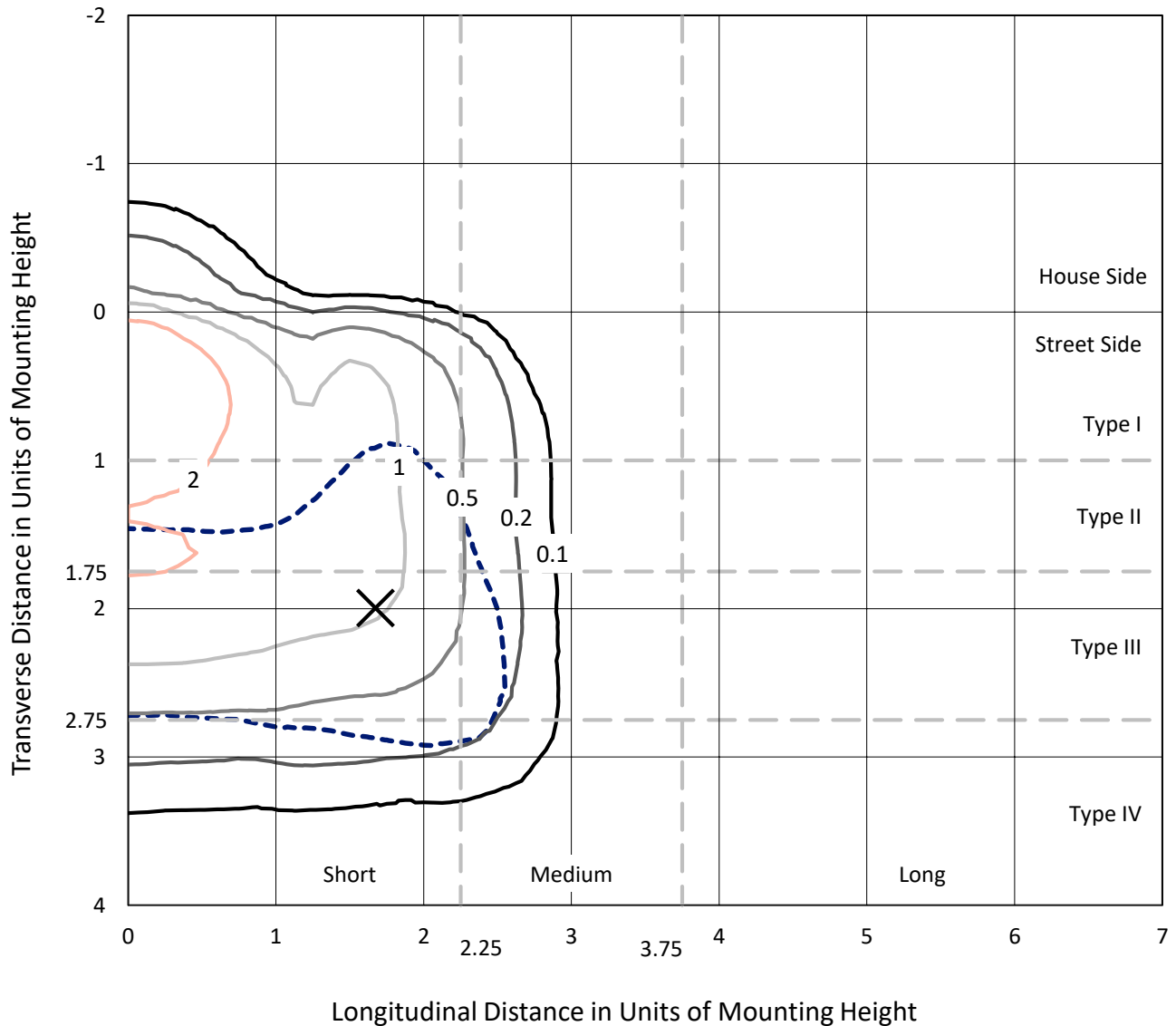
Lumens per Lamp: N/A  
Luminaire Lumens: 1858.5 lumens  
Efficiency: N/A  
Efficacy: 75.2 lumens/watt  
Luminous Opening: Rectangular (W 0.17' x L: 1' x H: 0')  
IES Classification: Type IV - Short - Semi-Cutoff  
BUG Rating: B0 - U0 - G1  
  
Input Watts (W): 24.7  
Input Voltage (V): NR  
Input Current (Ain): NR  
Voltage Rise (V): NR  
Power Factor: NR  
Total Harmonic Distortion (THDi): NR  
Frequency (hertz): 60  
Stabilization Time: NR  
Operation Time: NR  
Ambient Temperature (°C): NR  
Test Distance: 25 FT



REPORT NUMBER: P151629  
 CATALOG NUMBER: VWM-E01-LED-E1-SL4-HSS-7030

### Iso-Footcandle Lines of Horizontal Illumination

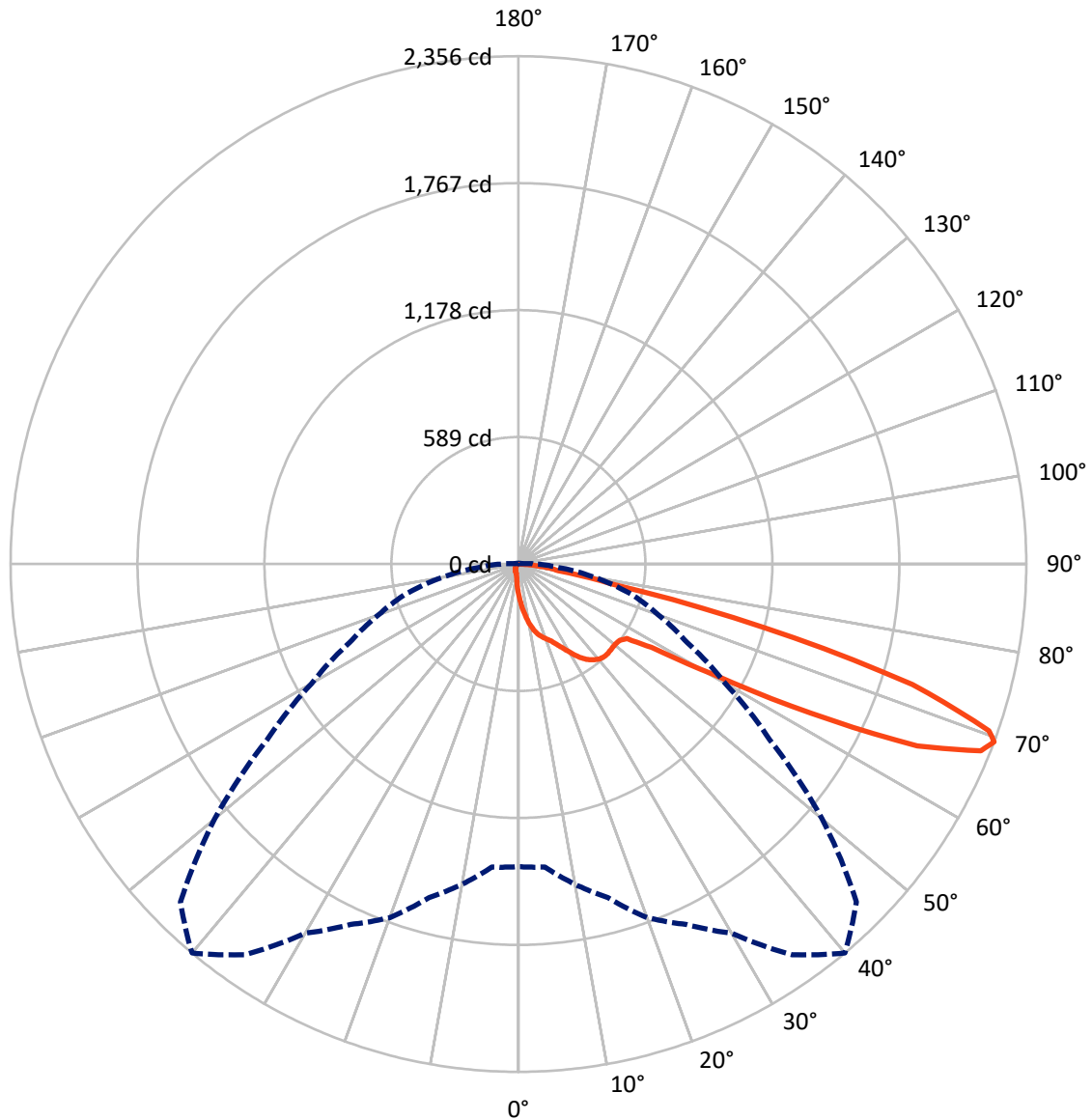
× Max cd  
 - - - 1/2 Max cd



Based on 10 foot mounting height. Maximum calculated value = 4.2 fc  
 Type IV - Short - Semi-Cutoff

REPORT NUMBER: P151629  
CATALOG NUMBER: VWM-E01-LED-E1-SL4-HSS-7030

### Luminous Intensity Polar Plot



— Vertical Plane Through 40-Deg Lateral    - - - Horizontal Cone Through 69-Deg Vertical

REPORT NUMBER: P151629

CATALOG NUMBER: VWM-E01-LED-E1-SL4-HSS-7030

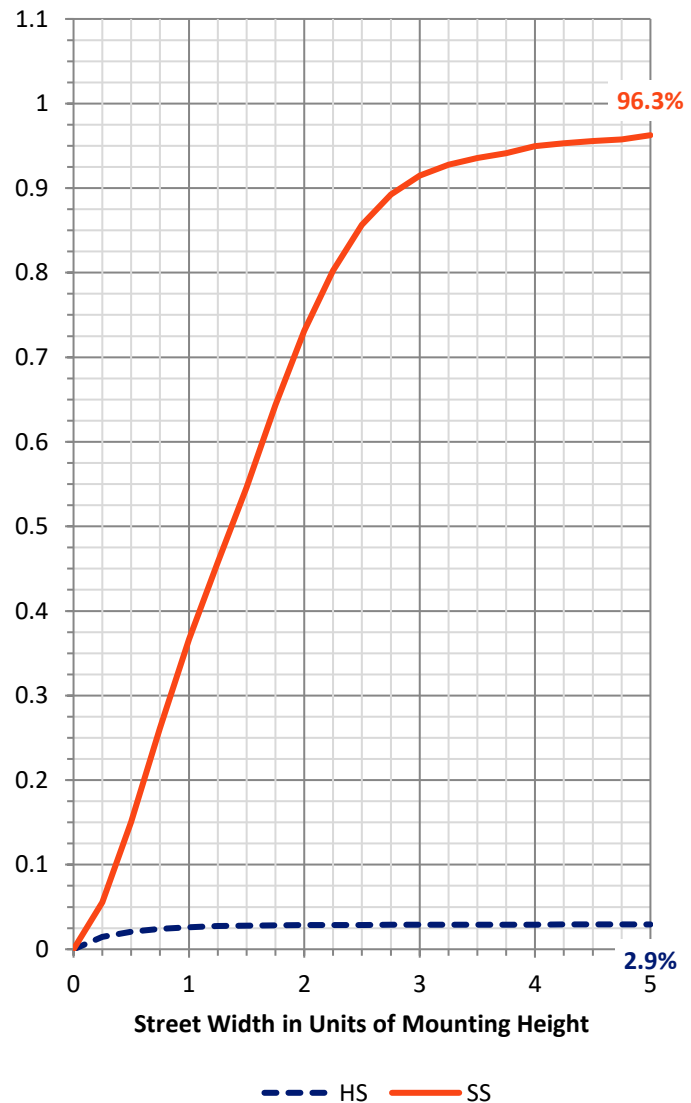
**FLUX DISTRIBUTION:**

		Downward	Upward	Total
<b>House Side</b>	Lumens	55.3	0.0	55.3
	% Fixture	3.0	0.0	3.0
<b>Street Side</b>	Lumens	1803.2	0.0	1803.2
	% Fixture	97.0	0.0	97.0
<b>Total</b>	Lumens	1858.5	0.0	1858.5
	% Fixture	100.0	0.0	100.0

**Coefficient of Utilization**

**ZONAL LUMENS:**

Zone	Lumens	% Fixture
0°-10°	14.4	0.8
10°-20°	49.7	2.7
20°-30°	95.2	5.1
30°-40°	158.3	8.5
40°-50°	214.2	11.5
50°-60°	335.0	18.0
60°-70°	688.8	37.1
70°-80°	277.1	14.9
80°-90°	25.6	1.4
90°-100°	0.0	0.0
100°-110°	0.0	0.0
110°-120°	0.0	0.0
120°-130°	0.0	0.0
130°-140°	0.0	0.0
140°-150°	0.0	0.0
150°-160°	0.0	0.0
160°-170°	0.0	0.0
170°-180°	0.0	0.0
0°-90°	1858.5	100.0
0°-180°	1858.5	100.0



REPORT NUMBER: P151629

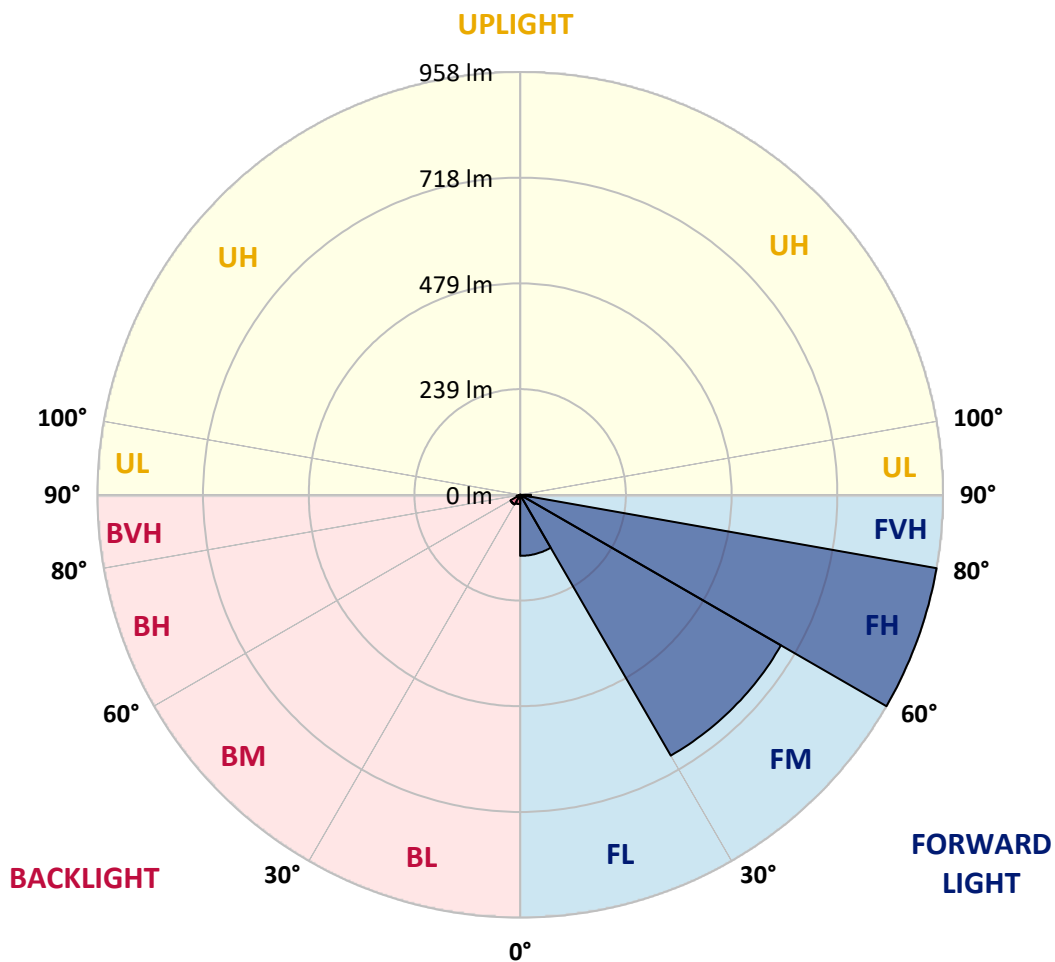
CATALOG NUMBER: VWM-E01-LED-E1-SL4-HSS-7030

**LUMINAIRE CLASSIFICATION SYSTEM LUMEN TABLE AND BUG RATING:**

Zone		Lumens	% Fixture	Zone Rating/Lumen Limit		
				B	U	G
FL	(0°-30°)	138.3	7.4			
FM	(30°-60°)	682.3	36.7			
FH	(60°-80°)	957.9	51.5			G1/1800
FVH	(80°-90°)	24.7	1.3			G1/100
BL	(0°-30°)	21.0	1.1	B0/110		
BM	(30°-60°)	25.3	1.4	B0/220		
BH	(60°-80°)	8.1	0.4	B0/110		G0/110
BVH	(80°-90°)	0.9	0.1			G0/10
UL	(90°-100°)	0.0	0.0		U0/0	
UH	(100°-180°)	0.0	0.0		U0/0	

**BUG Rating: B0-U0-G1**

Type IV Short





REPORT NUMBER: P151629  
 CATALOG NUMBER: VWM-E01-LED-E1-SL4-HSS-7030

**CANDELA DISTRIBUTION (FULL):**

	0°	5°	10°	15°	20°	25°	30°	35°	40°	45°	50°
0°	140.4	140.4	140.4	140.4	140.4	140.4	140.4	140.4	140.4	140.4	140.4
2.5°	187.2	185.1	182.7	182.7	179.6	179.6	177.8	172.9	172.3	169.6	166.8
5°	239.0	237.2	234.1	231.4	228.9	224.7	221.6	215.9	209.5	203.4	197.9
7.5°	289.5	288.6	283.1	282.2	278.3	271.3	265.2	256.7	245.7	237.2	227.1
10°	336.4	334.3	333.1	327.9	322.1	314.5	305.1	294.7	281.9	268.5	254.2
12.5°	373.6	372.3	366.9	364.7	358.6	351.0	339.2	325.8	313.0	295.6	278.9
15°	401.3	399.1	395.5	392.1	384.8	378.1	367.2	352.6	337.0	318.2	298.1
17.5°	424.4	420.4	419.5	414.4	406.7	398.8	386.7	373.3	355.0	336.1	314.2
20°	455.5	450.0	448.2	440.5	431.7	420.8	406.7	390.0	370.8	350.1	327.6
22.5°	492.0	488.0	484.1	477.4	466.1	450.6	430.2	411.9	387.6	364.7	340.4
25°	543.7	540.4	534.0	524.9	510.9	492.3	467.6	440.8	412.2	383.0	354.4
27.5°	594.0	590.9	586.4	579.4	563.5	543.1	512.7	478.6	442.4	407.0	375.4
30°	641.2	638.4	633.9	626.9	612.9	592.8	558.4	521.8	476.8	435.7	397.6
32.5°	692.0	691.1	685.9	675.9	663.7	636.6	599.2	559.9	514.2	466.7	422.3
35°	749.6	742.6	737.7	727.6	706.9	678.0	634.2	591.2	543.1	494.4	444.8
37.5°	798.3	791.6	785.5	772.7	747.4	710.6	661.0	613.8	564.1	514.5	464.0
40°	833.9	830.5	823.2	806.5	778.2	734.3	680.8	629.3	579.4	529.4	479.5
42.5°	860.4	855.2	847.0	829.6	796.1	746.2	688.7	635.7	586.4	538.6	489.6
45°	870.1	865.9	858.2	839.4	803.1	749.6	688.4	633.9	586.7	541.3	496.3
47.5°	864.3	860.1	853.4	835.7	800.1	745.6	682.9	628.7	583.6	542.2	502.3
50°	845.2	842.7	837.5	822.6	790.7	738.0	678.0	625.9	583.0	546.8	510.9
52.5°	843.3	841.8	835.4	820.5	787.9	735.6	677.4	627.5	588.2	552.6	517.0
55°	1030.6	1008.9	960.5	919.4	851.9	771.5	708.2	652.1	610.1	575.4	550.4
57.5°	1464.7	1432.4	1368.8	1290.6	1135.3	982.8	860.7	772.4	728.9	713.0	722.5
60°	1668.1	1662.3	1652.3	1615.1	1535.6	1404.4	1258.3	1100.3	1037.0	1031.5	1050.7
62.5°	1764.6	1760.9	1764.0	1759.4	1734.8	1696.4	1654.4	1586.2	1523.5	1483.0	1397.1
65°	1809.0	1811.5	1828.8	1842.5	1845.6	1855.6	1886.4	1971.3	2033.4	1929.0	1690.6
67.5°	1696.1	1710.4	1750.3	1800.2	1858.7	1915.3	2006.6	2185.6	2313.2	2190.5	1852.0
69°	1404.1	1411.1	1508.6	1602.6	1745.4	1845.3	1977.7	2212.4	2355.8	2217.3	1839.2
70°	1105.5	1111.9	1216.3	1344.1	1585.6	1714.1	1887.3	2167.1	2316.0	2181.7	1773.4
72.5°	498.7	489.6	526.4	594.9	857.3	1061.3	1364.2	1755.8	1910.7	1747.8	1326.8
75°	348.3	344.3	348.3	348.6	389.4	502.3	633.9	951.7	1177.0	1015.6	633.9
77.5°	269.7	267.0	264.3	261.2	266.1	298.1	310.8	337.6	438.4	414.7	241.7
80°	213.4	211.0	217.7	215.6	215.6	219.2	216.8	206.7	187.8	174.1	155.9
82.5°	99.3	99.9	99.9	108.4	130.6	152.5	159.5	149.5	132.7	113.0	91.0
85°	9.4	10.7	18.0	27.7	55.1	62.1	62.4	51.8	51.8	40.8	32.9
87.5°	0.0	0.3	0.3	0.3	2.7	7.6	6.4	1.8	0.9	0.9	1.5
90°	0.0	0.0	0.0	0.0	0.0	0.0	0.0	0.0	0.0	0.0	0.0



REPORT NUMBER: P151629  
 CATALOG NUMBER: VWM-E01-LED-E1-SL4-HSS-7030

**CANDELA DISTRIBUTION (continued):**

	55°	60°	65°	70°	75°	80°	85°	90°	95°	100°	105°
0°	140.4	140.4	140.4	140.4	140.4	140.4	140.4	140.4	140.4	140.4	140.4
2.5°	162.0	161.1	157.4	153.7	150.4	146.7	143.4	140.0	136.4	133.7	130.3
5°	189.4	182.7	175.1	167.8	160.4	152.8	144.9	137.9	130.6	123.9	117.5
7.5°	217.1	204.0	193.6	180.5	168.7	156.8	145.8	134.6	124.2	114.5	105.3
10°	240.5	224.7	208.5	191.8	174.8	158.9	143.7	130.3	116.6	104.7	93.5
12.5°	259.7	239.6	219.8	198.8	179.6	159.5	140.7	124.5	108.4	95.0	83.4
15°	277.0	253.9	230.2	205.8	181.5	158.6	137.6	117.5	101.1	85.9	72.8
17.5°	291.1	264.6	237.8	210.4	184.2	157.4	133.7	112.6	93.5	77.6	64.8
20°	303.2	275.5	246.6	215.9	186.0	157.1	130.3	106.6	86.8	70.0	57.5
22.5°	314.5	286.8	255.7	222.9	188.8	156.8	127.3	102.0	81.0	64.2	51.8
25°	327.3	298.1	265.5	230.2	193.6	158.0	125.4	98.3	75.8	58.8	47.2
27.5°	341.6	310.8	277.0	239.3	200.0	160.4	124.8	94.4	71.2	53.6	43.5
30°	361.7	326.1	288.6	248.4	205.8	163.2	124.2	91.9	66.7	49.6	39.9
32.5°	379.3	341.0	301.4	257.9	212.2	165.9	123.9	88.6	62.4	45.7	37.1
35°	397.9	354.7	312.4	267.0	217.7	169.0	123.6	86.2	58.5	41.7	34.4
37.5°	414.1	366.3	320.9	274.9	223.8	171.7	123.9	84.0	54.8	38.4	32.0
40°	427.8	378.1	330.3	282.2	230.2	176.0	124.2	81.9	51.1	35.3	29.8
42.5°	439.9	389.4	340.4	290.4	237.5	180.8	126.0	80.1	48.1	32.6	27.7
45°	449.4	399.7	351.3	302.0	249.3	188.8	129.4	78.9	45.1	30.1	25.9
47.5°	459.1	415.0	369.9	320.3	266.7	201.2	135.2	78.5	42.6	28.3	24.4
50°	472.5	430.2	386.3	338.9	282.5	214.0	142.2	78.9	39.6	26.5	22.8
52.5°	482.2	445.7	407.7	371.1	320.3	253.0	169.3	84.3	38.1	25.0	21.0
55°	539.8	533.4	534.3	540.4	501.1	430.5	283.1	121.8	44.8	28.3	20.7
57.5°	761.1	783.7	796.7	796.4	731.6	606.8	380.3	156.5	49.9	32.9	24.7
60°	1052.2	1035.1	1011.1	951.7	865.6	692.6	425.3	168.4	43.2	26.2	22.5
62.5°	1309.4	1209.6	1121.0	1024.8	911.8	722.5	434.5	167.4	37.8	19.8	15.8
65°	1469.9	1290.3	1147.2	1026.6	893.6	697.5	411.0	153.7	32.0	16.1	13.1
67.5°	1508.2	1246.7	1044.3	890.5	746.5	542.8	301.7	115.7	25.0	13.4	11.6
69°	1424.5	1108.2	865.2	690.8	543.1	360.2	186.6	73.1	19.2	12.2	10.7
70°	1310.4	963.9	704.8	554.4	402.2	253.0	130.6	51.5	15.5	11.3	9.7
72.5°	843.0	506.3	346.5	241.1	165.9	100.8	51.1	23.1	11.9	9.4	7.9
75°	327.0	187.2	135.8	103.2	80.7	56.0	31.1	14.9	10.0	7.9	6.1
77.5°	161.1	123.3	100.8	69.1	40.2	25.0	16.7	11.6	8.2	5.8	4.0
80°	127.3	84.6	50.5	31.4	23.7	18.0	12.8	9.4	6.1	3.7	2.7
82.5°	65.2	35.6	26.2	21.3	17.7	14.0	10.4	6.7	4.0	2.4	2.1
85°	20.4	14.9	13.4	13.1	12.2	10.0	7.3	4.3	2.4	1.5	1.5
87.5°	1.5	2.1	2.7	2.1	2.4	2.1	2.7	1.8	1.2	1.2	0.9
90°	0.0	0.0	0.0	0.0	0.0	0.0	0.0	0.0	0.0	0.0	0.0





REPORT NUMBER: P151629

CATALOG NUMBER: VWM-E01-LED-E1-SL4-HSS-7030

**CANDELA DISTRIBUTION (continued):**

	110°	115°	120°	125°	130°	135°	140°	145°	150°	155°	160°
0°	140.4	140.4	140.4	140.4	140.4	140.4	140.4	140.4	140.4	140.4	140.4
2.5°	127.9	124.2	120.9	118.7	114.8	113.3	111.7	111.1	108.4	109.0	106.6
5°	111.7	105.3	100.5	95.6	91.0	87.7	84.9	81.6	78.9	77.6	75.2
7.5°	97.1	88.9	82.5	77.3	71.9	67.6	63.9	61.5	59.1	56.6	55.4
10°	84.3	75.5	68.2	63.0	57.8	54.2	51.5	49.6	48.1	47.2	46.9
12.5°	72.5	63.9	57.2	52.7	48.7	46.9	45.7	44.8	44.4	44.1	44.1
15°	63.3	54.8	49.6	46.3	44.4	43.5	43.2	42.6	42.0	41.7	41.7
17.5°	54.8	48.4	44.8	42.9	42.0	41.4	40.8	40.2	39.6	39.3	39.3
20°	49.0	43.8	42.0	40.8	39.9	39.3	38.4	37.8	37.4	37.1	36.8
22.5°	44.4	41.1	39.9	39.0	37.8	36.8	36.2	35.6	35.0	34.7	34.4
25°	41.1	39.0	38.1	36.8	35.6	34.7	33.8	32.9	32.3	32.0	31.4
27.5°	38.7	37.1	35.9	34.4	33.2	32.3	31.4	30.4	29.8	29.2	28.9
30°	36.5	35.0	33.5	32.3	30.7	29.8	28.6	27.7	27.4	26.8	26.2
32.5°	34.4	32.9	31.4	29.8	28.3	27.1	26.5	25.3	24.7	24.4	23.7
35°	32.0	30.4	28.6	27.4	25.9	24.7	23.7	22.8	22.2	21.6	21.3
37.5°	29.8	28.0	26.2	24.7	23.4	22.2	21.3	20.4	19.8	19.2	18.9
40°	27.4	25.6	23.7	22.2	21.0	20.1	19.2	18.3	17.7	17.4	17.4
42.5°	25.3	23.1	21.3	20.1	19.2	18.0	17.0	16.1	15.8	15.5	15.8
45°	23.1	21.0	19.5	18.3	17.4	16.1	15.2	14.6	14.3	14.6	14.9
47.5°	21.3	19.2	17.7	16.7	15.8	14.9	14.0	13.4	13.4	14.0	14.6
50°	19.5	17.4	16.1	15.5	14.6	13.7	12.5	12.2	12.5	13.1	13.7
52.5°	17.7	15.2	14.3	14.0	13.1	12.2	11.3	11.0	11.3	11.9	11.6
55°	15.8	13.4	13.1	12.8	11.9	10.7	9.7	9.7	9.7	9.4	8.8
57.5°	15.2	11.9	11.6	11.3	10.4	9.1	8.5	7.9	7.6	6.7	6.4
60°	15.8	10.7	10.7	10.0	9.1	7.9	7.0	6.1	5.5	4.9	4.9
62.5°	12.8	9.7	9.4	8.8	7.6	6.4	5.5	4.6	4.3	4.0	4.0
65°	10.4	8.8	8.2	7.3	6.4	5.2	4.3	3.7	3.3	3.3	3.7
67.5°	9.4	7.9	7.0	6.1	5.2	4.0	3.3	3.0	3.0	3.3	3.3
69°	8.8	7.3	6.4	5.5	4.6	3.7	3.0	3.0	3.0	3.0	3.3
70°	8.2	7.0	6.1	5.2	4.0	3.0	2.7	2.7	3.0	3.0	3.3
72.5°	6.4	5.5	5.2	4.3	3.0	2.7	2.4	2.7	2.7	3.0	3.0
75°	4.9	4.0	4.0	3.3	2.4	2.1	2.1	2.4	2.4	2.7	2.7
77.5°	3.3	2.7	2.7	2.4	2.1	1.8	1.8	2.1	2.4	2.4	2.7
80°	2.4	2.1	1.8	2.1	1.8	1.5	1.8	2.1	2.1	2.4	2.4
82.5°	1.8	1.8	1.8	1.8	1.5	1.5	1.8	1.8	2.1	2.4	2.4
85°	1.5	1.5	1.5	1.5	1.5	1.5	1.5	1.8	1.8	2.1	2.1
87.5°	0.9	0.9	0.9	1.2	1.2	1.5	1.5	1.5	1.5	1.8	1.8
90°	0.0	0.0	0.0	0.0	0.0	0.0	0.0	0.0	0.0	0.0	0.0



REPORT NUMBER: P151629  
 CATALOG NUMBER: VWM-E01-LED-E1-SL4-HSS-7030

**CANDELA DISTRIBUTION (continued):**

	165°	170°	175°	180°
0°	140.4	140.4	140.4	140.4
2.5°	105.9	105.6	104.4	104.7
5°	74.3	72.5	73.7	73.4
7.5°	54.5	54.2	53.9	54.5
10°	46.6	46.6	46.3	46.6
12.5°	43.8	43.8	43.8	43.8
15°	41.7	41.7	41.4	41.4
17.5°	39.3	39.3	39.3	39.0
20°	36.8	36.5	36.5	36.5
22.5°	34.1	33.8	33.8	33.8
25°	31.4	31.1	31.1	31.1
27.5°	28.6	28.3	28.0	28.0
30°	25.9	25.6	25.3	25.3
32.5°	23.1	22.8	22.5	22.5
35°	20.7	20.7	20.4	20.1
37.5°	18.6	18.6	18.6	18.6
40°	17.0	17.4	17.4	17.4
42.5°	16.1	16.4	16.7	17.0
45°	15.5	16.1	16.4	16.4
47.5°	15.2	15.5	15.8	15.8
50°	14.0	13.7	13.7	13.7
52.5°	11.3	10.7	10.4	10.0
55°	8.2	7.9	7.3	7.3
57.5°	5.8	5.8	5.5	5.5
60°	4.6	4.6	4.3	4.6
62.5°	4.0	4.0	4.0	4.0
65°	3.7	3.7	3.7	3.7
67.5°	3.7	3.7	3.7	3.7
69°	3.3	3.3	3.3	3.3
70°	3.3	3.3	3.3	3.3
72.5°	3.0	3.0	3.0	3.0
75°	2.7	3.0	3.0	3.0
77.5°	2.7	2.7	2.7	2.7
80°	2.4	2.4	2.7	2.7
82.5°	2.4	2.4	2.4	2.4
85°	2.1	2.1	2.4	2.4
87.5°	1.8	1.8	2.1	2.1
90°	0.0	0.0	0.0	0.0

(END OF REPORT)